



Ceiling Bracket Installation Guide

MIRRORSTONE

Before installation, please make sure that you have the correct size bracket for your panel.

350mm Bracket can be used with:

595 x 595 (350w) NXT Gen & Nexus IR Panels

595 x 995 (580w) NXT Gen, Nexus & Classic IR Panels

595 x 1195 (700w) NXT Gen, Nexus & Classic Panels

500mm Bracket can be used with:

795 x 1195 (900w) NXT Gen, Nexus & Classic

580mm Bracket can be used with:

995 x 1195 (1200W) NXT Gen, Nexus & Classic

Please read through this guide before attempting installation of the ceiling brackets, to understand how to correctly install them.

Once the panel is installed, it should be no more than 3m away from the floor of the room. This is because the infrared waves are less effective at distances of more than 3m

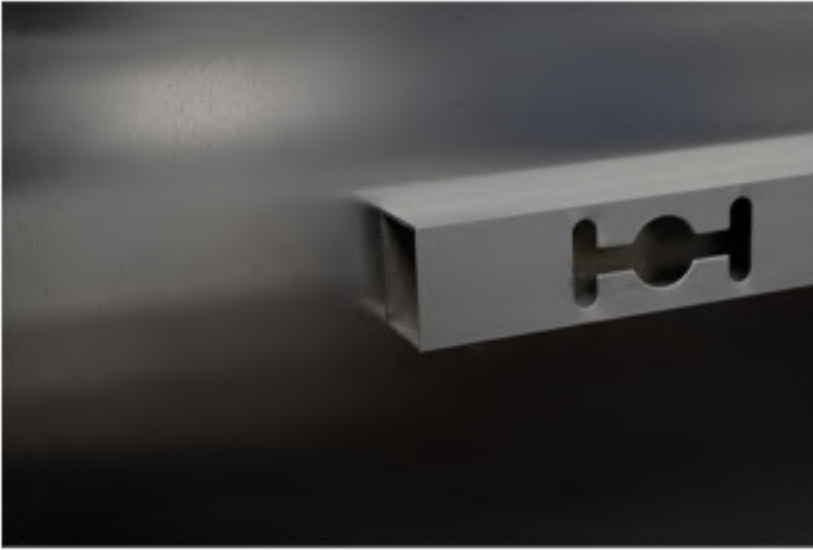
Step 1: On the back of the panel, locate the black caps on the ends of the mounting brackets.



Step 2: Using either your fingernail, or a flathead screwdriver, gently pry the black cap off the end of the mounting bracket. Repeat for all four caps.



Step 3: The brackets should now be open on all sides, like in the picture below.



Step 4: Insert one lip of the ceiling bracket into the the side of one of the wall brackets on the back of the heater.



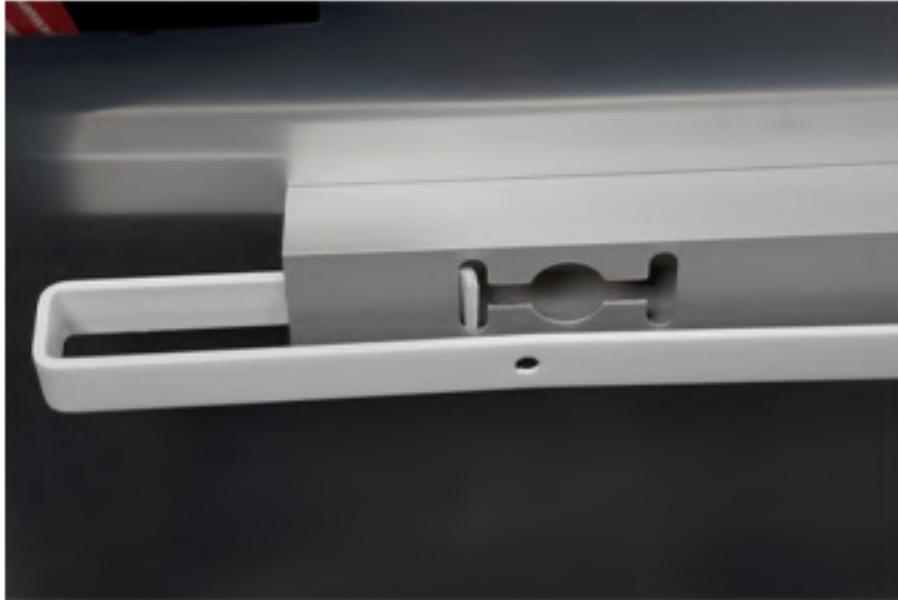
Step 5: Pull the ceiling bracket all the way into the wall mounts, like shown in the image below.



Step 5: Pull the other end of the ceiling brackets into the opening, so that both lips are inside the wall mounts on the back of the panel.



Step 7: Ensure that both lips of the ceiling bracket fit into the frame holes on both sides, like shown in the picture below.



Step 8: Drill and mount the ceiling brackets into your ceiling, according to the width of the brackets for your panel, and repeat these steps with your brackets mounted to the ceiling.

MIRRORSTONE

HEATING



sales@mirrorstone.co.uk

www.mirrorstoneheating.co.uk

86 Scudamore Road

Leicester, LE3 1UQ

+44(0) 116 436 2250